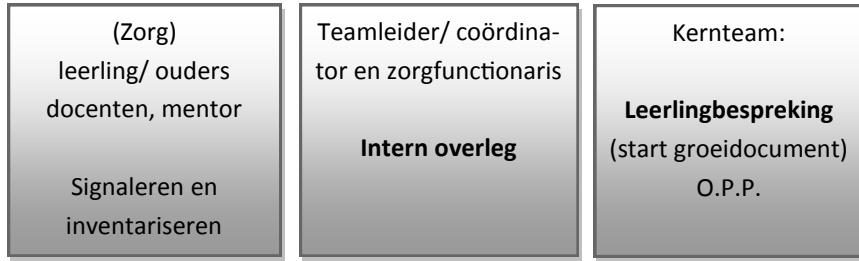
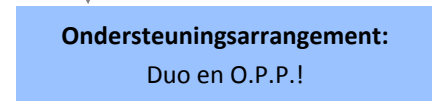
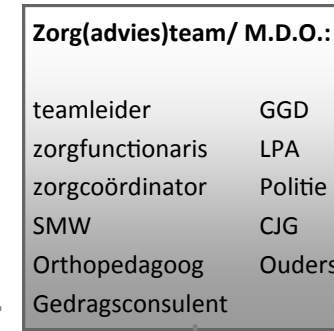


Basis zorg: aansturing teamleider/coördinator
i.s.w. met de teamzorgfunctionaris.

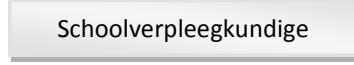
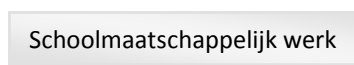
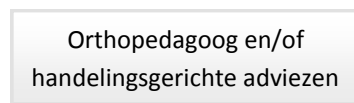


Extra ondersteuning: aansturing
zorgcoördinator en teamzorgfunctionaris



Lichte ondersteuning: aansturing teamzorgfunctionaris ovv.
Zorgcoördinator

Tijdelijke inzet mogelijk zoals:



Zware ondersteuning: via teamzorg-
functionaris naar:

